

# Aluminium Column Fitting Instructions

## Aluminium Radiator in White 9010

Please read these instructions and terms and conditions carefully prior to installation.

Failure to do so may invalidate the warranty.



## Pipe Centres

Pipe centres left to right = width plus valves

Pipe centres from wall = 80mm

Depth from wall = 125mm

## 1. Unpack & Inspect

This product should have reached you in perfect condition. Please carefully unpack and inspect this radiator and all fittings. Your point of purchase must be notified of any shortages or damage within 28 days of delivery. For further information please see terms and conditions on reverse.

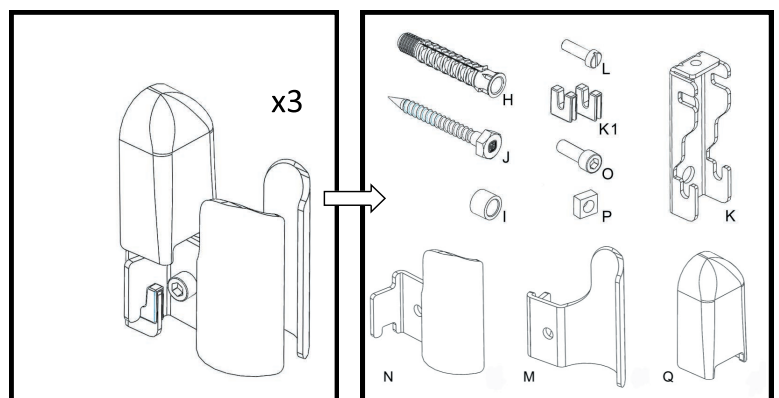
## 2. Contents

You should have:

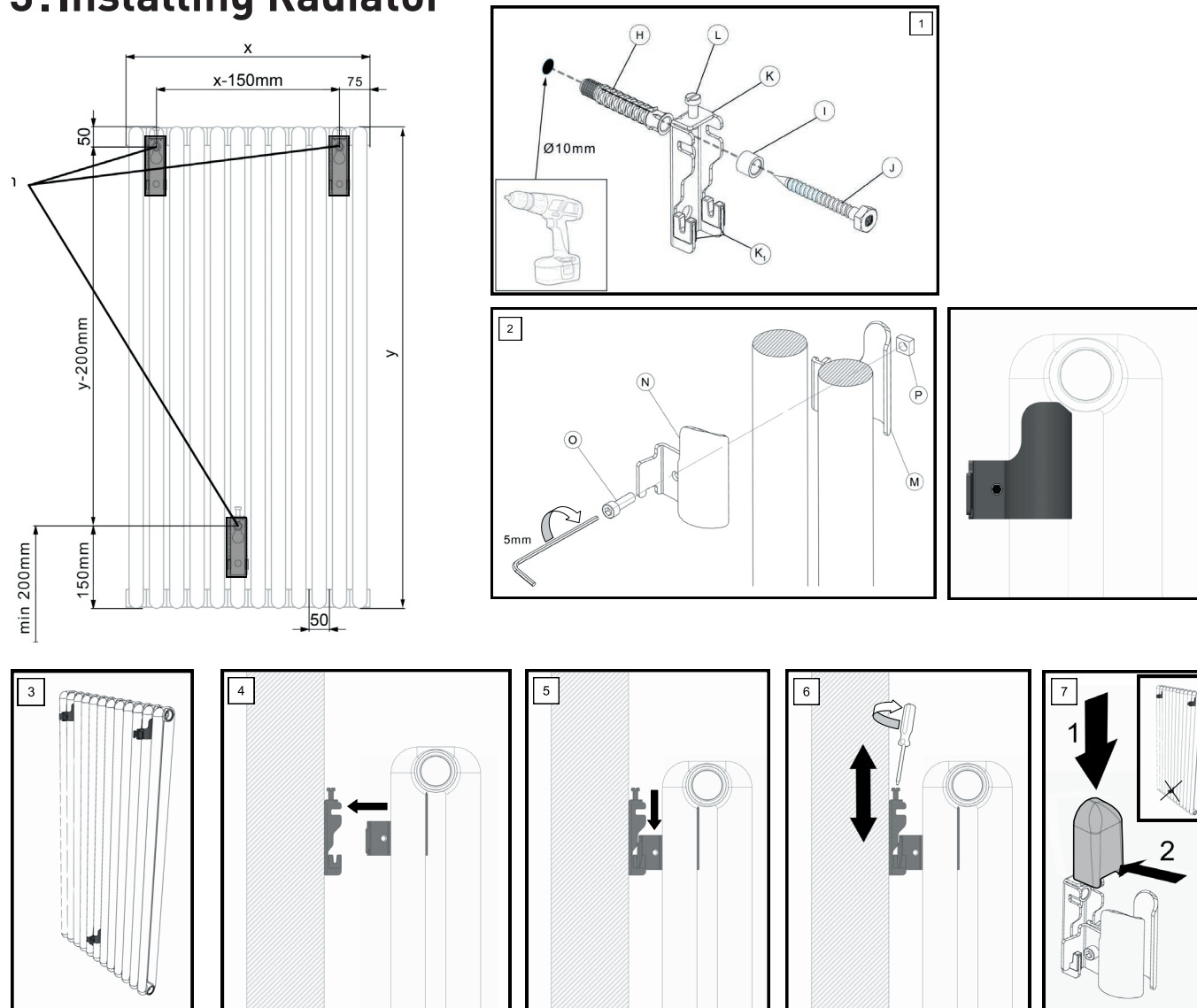
- 1 Radiator
- 3 Brackets & their components as shown below
- 1 Black Rubber bung diverter - do not discard (for radiators over 800mm high & 10 sections or wider)

You will need:

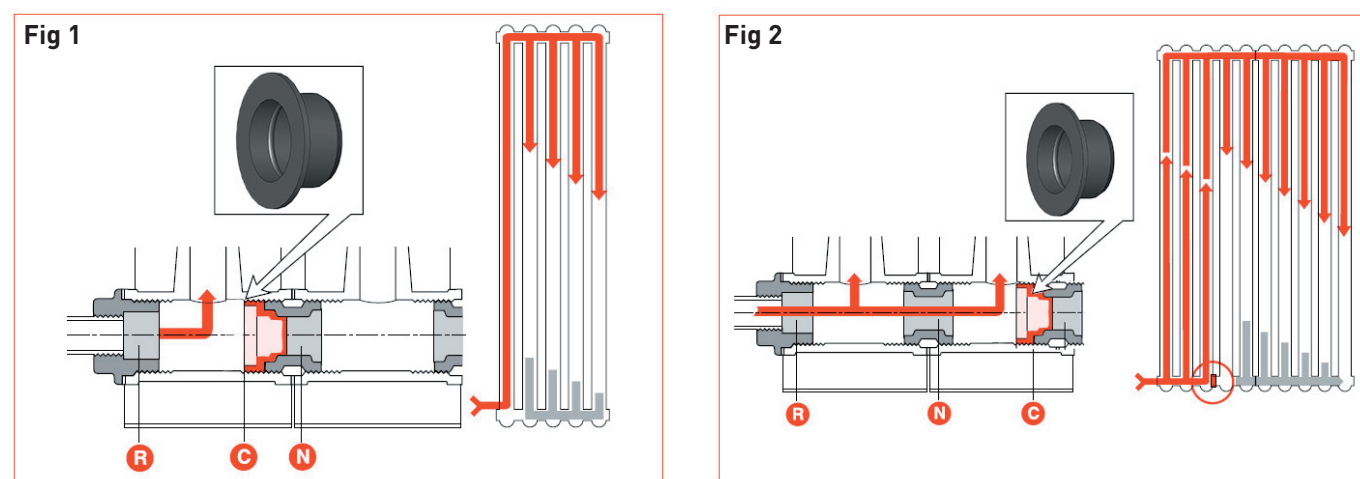
- Tape measure
- Electric drill and bits
- Spirit level
- 5mm Hex Key
- Screwdriver
- Airvent key
- Appropriate wall fixings
- Spanner for valves & vents



### 3. Installing Radiator



### 4. Diverter Installation



- Radiators up to 10 sections wide and with a height of up to 800mm are ready for installation.
- Radiators up to 10 sections wide and with a height of over 800mm: fit the rubber plug/baffle **C** before the 1st and 2nd section - nipple **N** and after the bush **R**. See **fig. 1**. To carry out this operation the handle of a screwdriver can be used to gently push the diverter into place.
- Radiators made up of more than 10 sections and with a height of over 800mm: fit the rubber plug/baffle **C** on the pipe nipple **N** - between the 3rd and 4th section. See **fig. 2**.

# 5. Commission Radiator

**Please Note:**  
In accordance with Part L1 2006 of the Building Regulations and BS7593:1992 code of practice for the treatment of hot water and central heating systems, we strongly recommend flushing the heating system post installation of new radiators and then adding the correct quantity and type of inhibitor for use with your radiator and system to prevent corrosion. Damage caused to systems not protected by a suitable inhibitor will not be covered by manufacturer’s guarantee.

## Technical Specifications

Materials	Aluminium.
Connections	½” flow and return.
Test pressure	24 Bar
Testing authority	EN442
Maximum operating pressure	16 Bar
Maximum working temperature	100°C
Packaging	Cardboard Packaging

**PLEASE NOTE:** To reduce the possibility of noise caused by rapid heating and cooling of aluminium radiators; adequate capacity for expansion must be provided within the overall heating system. Systems using micro bore pipework must have adequate pressure and flow rates for the number and style of radiators on the system.

## Terms & Conditions

All products must be inspected once removed from the packaging and your point of purchase notified within 28 days of delivery of any scratches, blemishes or other damage. Your point of purchase will then agree appropriate action.

Imperfect radiators should therefore not be fitted and we will not accept responsibility for replacement of scratched or damaged radiators once they have been fitted. This includes any consequential loss or cost of fitting.

If we are not notified within 28 days of the date on the signed delivery note then it will be deemed that we have fully complied with our obligations and claims will not be considered.

Failure to comply with any of the above may invalidate any claims. We recommend that after you check the product on delivery that it is stored in its packaging to prevent damage prior to installation, we cannot accept responsibility for items damaged after delivery.

## Guarantees & Liabilities

This product is guaranteed for 15 years. As we are not the manufacturers of this product we will take all reasonable endeavours to make over to you the benefit of any warranty or guarantee given by the manufacturer.  
The guarantees in all cases are subject to the products being installed in accordance with British and or European standards as well as these fitting instructions. The guarantees in all cases are restricted to the free of charge replacement or repair of the failed product only. Our liability will under no circumstances extend beyond the repair or replacement of the product supplied by us. Claims for either labour in replacement or damage to property are not admissible. Any goods that are returned, in the event of a problem, will belong to us.